

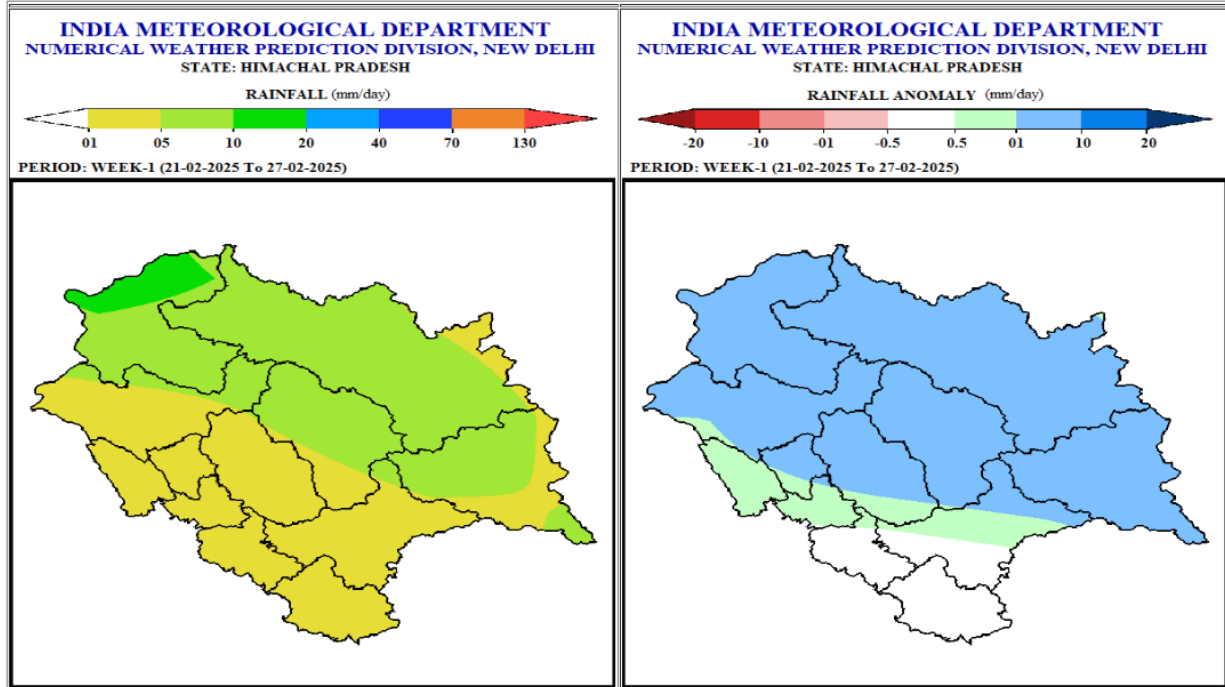
Extended Range Weather Forecast

Date:- 20.02.2025

Weather Forecast and Warning for two weeks w.e.f. 21th February, 2025

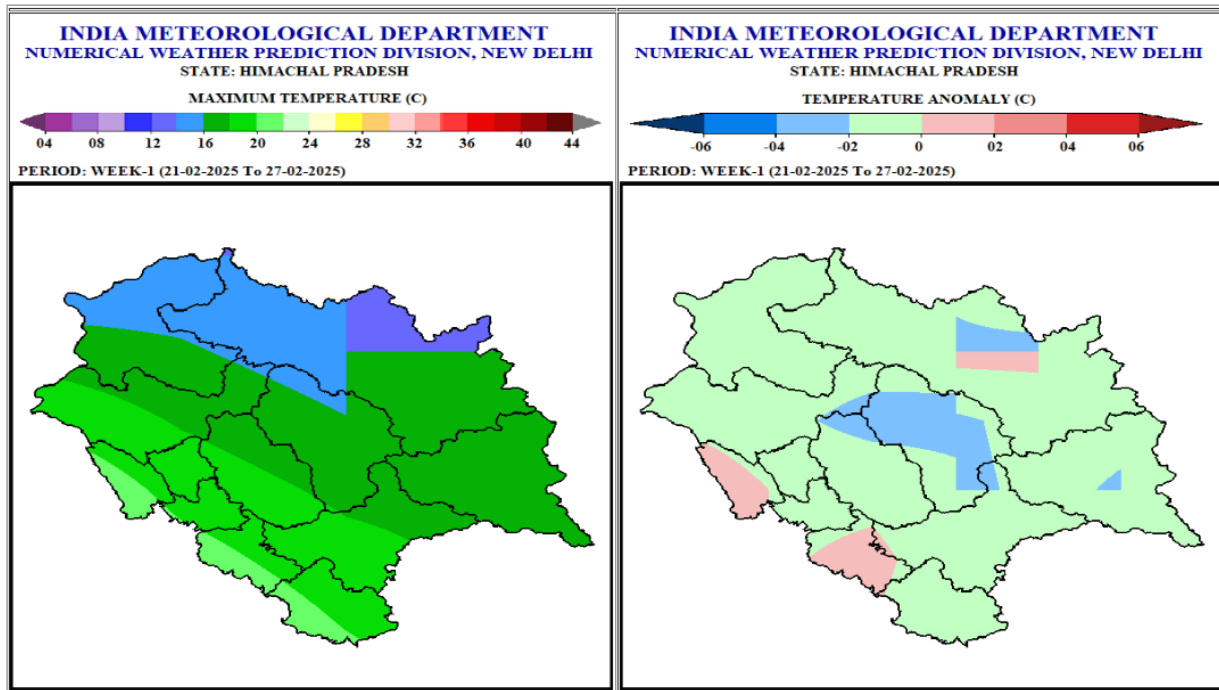
Week 1 (21th February 2025 – 27th February 2025)

Rainfall



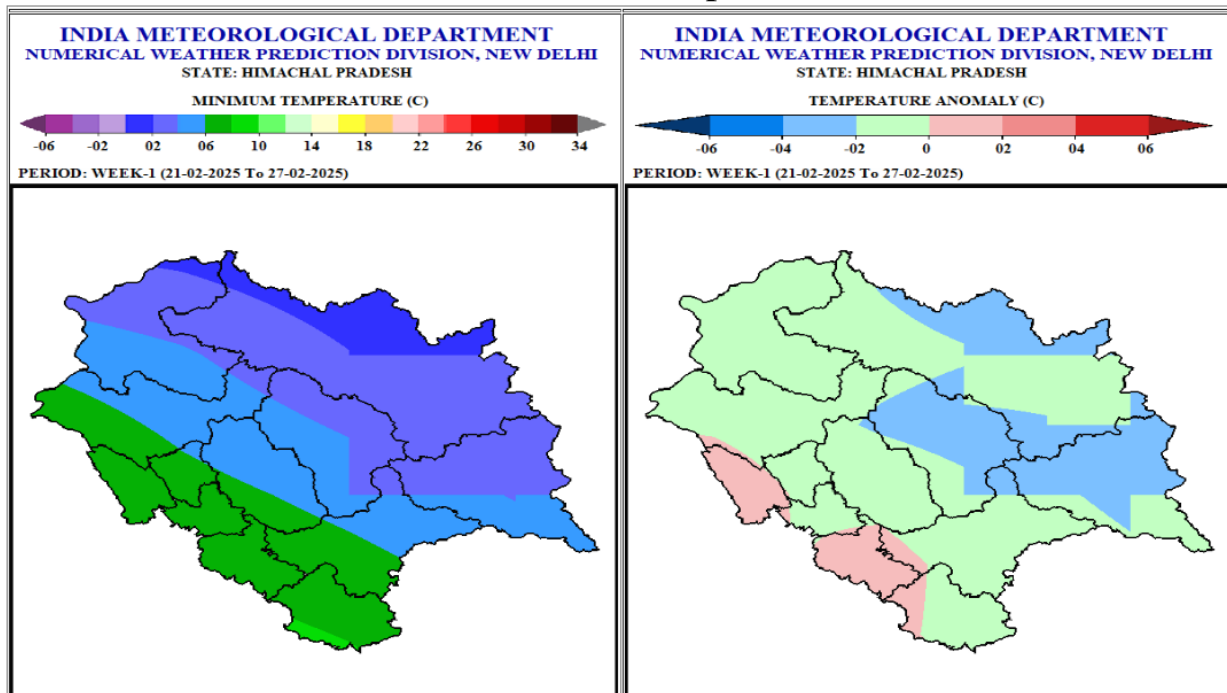
- Light precipitation very likely over many parts of the state during some days of week 1 except some parts of lower hills districts where it is near normal.
- Rainfall anomaly very likely to be above normal over most parts of the state in the week 1.

Maximum Temperatures



- Maximum Temperatures are very likely to be in the range of 12-16°C over many parts of the high hills except Kinnaur and some parts of Lahaul-Spiti and Chamba districts where it is likely to be in the range of 16-18°C; in the range of 16-20°C over most parts of mid hills and in the range of 20-24°C over some parts of the lower hills/plains in the week 1.
- Maximum Temperatures very likely to be near normal over most parts of the state in the week 1.

Minimum Temperatures

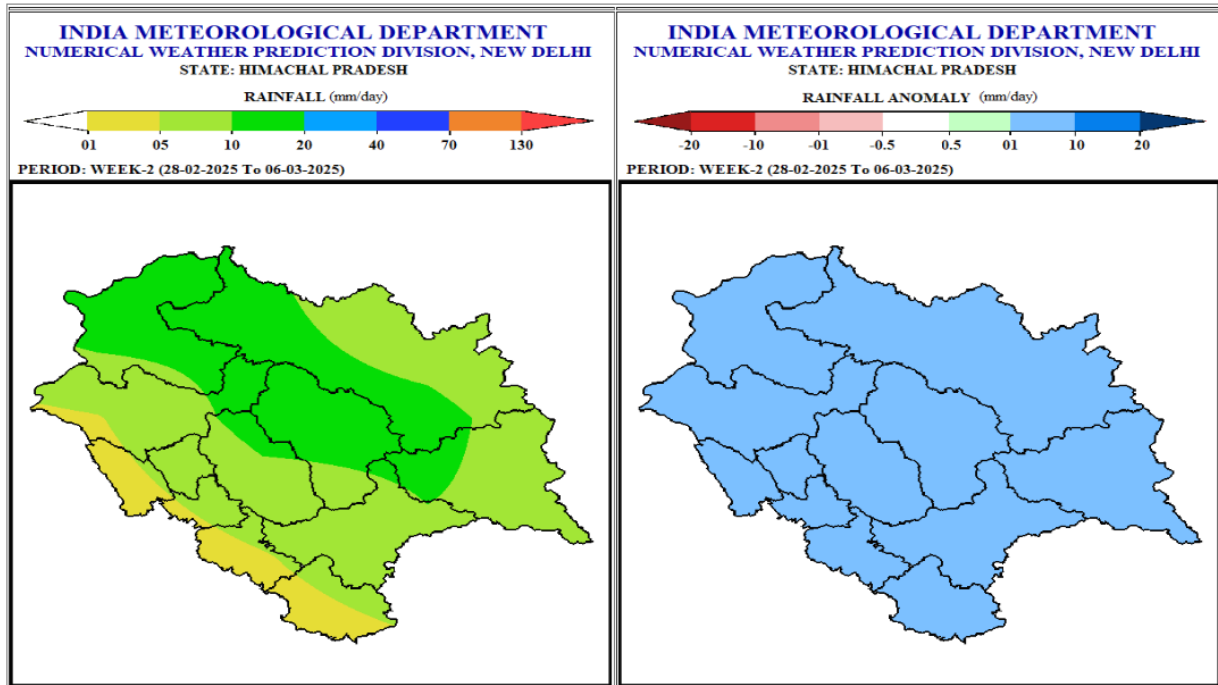


- Minimum Temperatures are very likely to be in the range of 6-8°C over most parts of lower hills/plains & adjoining mid hills and in the range of 4-6°C over many parts of mid hills and in the range of 0 to 4°C over many parts of high hills where it is likely to be in the range of 0 to -6°C in isolated pocket over high hills in the week 1.
- Minimum Temperatures are very likely to be normal over many parts of the state except some parts of

Kullu, Kinnaur and Lahaul-Spiti where it is likely to be below normal by -2 to -4°C and Solan and Una districts where it is likely to be above normal by 0-2°C in the week 1.

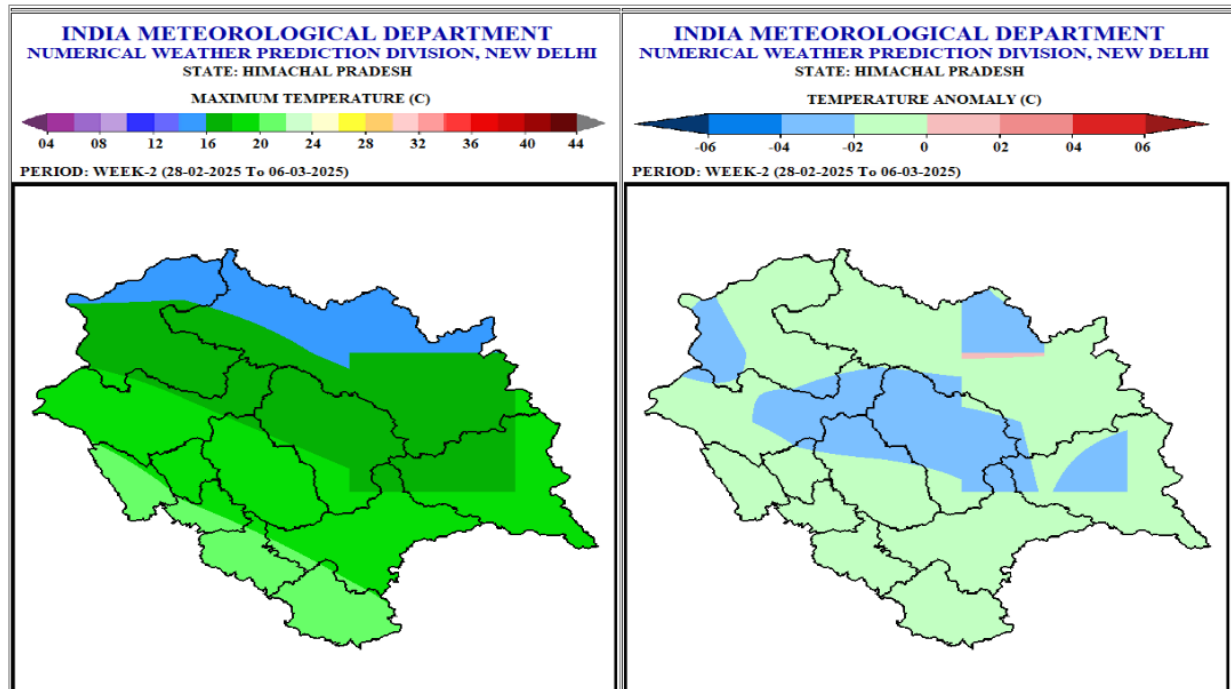
Week 2 (28st February 2025 – 06th March 2025)

Rainfall



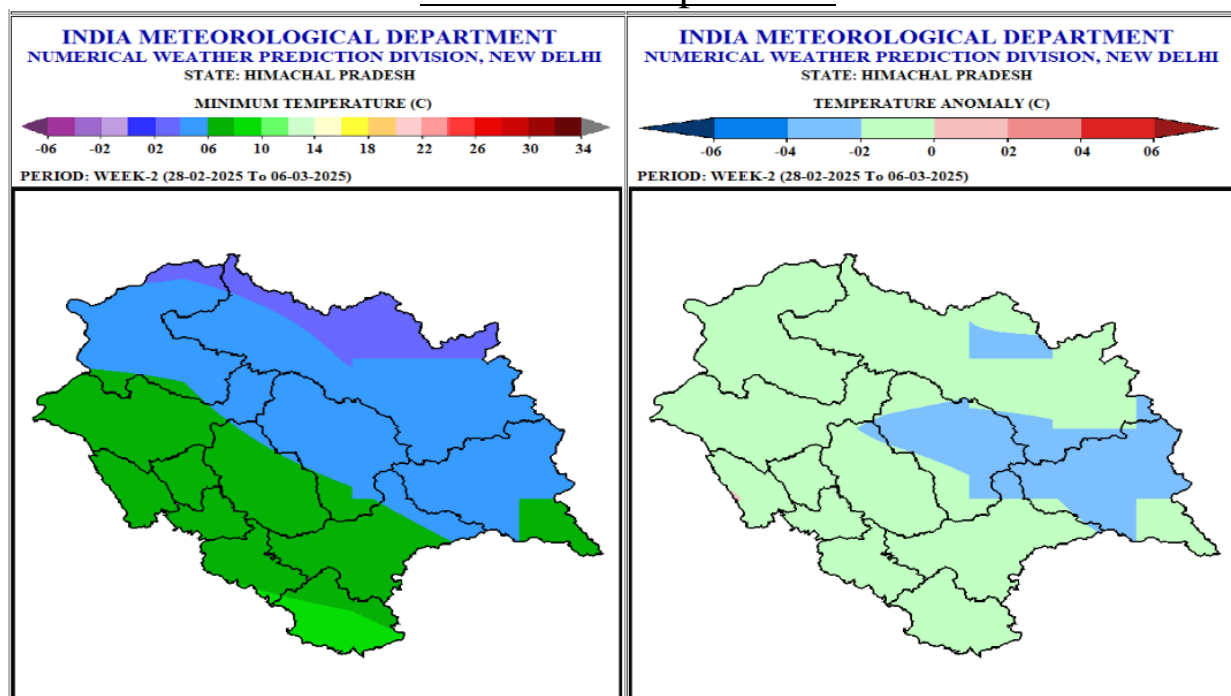
- Light precipitation likely over most parts of the state during some days of the week 2.
- Rainfall anomaly likely to be normal to above normal over most parts of the state in the week 2.

Maximum Temperatures



- Maximum Temperatures are likely to be in the range of 14-18°C over most parts of the high hills except some parts of Kinnaur and Lahaul-Spiti where it is likely to be in the range of 18-20°C; in the range of 16-20°C over most parts of mid hills & in the range of 20-24°C in the lower hills in the week 2.
- Maximum Temperatures are likely to be normal to below normal over most parts of the state in the week 2.

Minimum Temperatures



- Minimum Temperatures are likely to be in the range of 6-8°C over most parts of lower hills/plains except many parts of Sirmaur district where they are likely to be in the range of 8-10°C; in the range of 4-8°C over most parts of mid hills & in the range of 4-6°C over many parts of the high hills except some parts of Lahaul- Spiti where it is likely to be in the range of 0 to -6°C during many days of the week 2.
- Minimum Temperatures are likely to be normal over many parts of the state except some parts of Kullu, Kinnaur & Lahaul-Spiti districts where it is likely to be below normal by 2-4°C in the week 2.

Outlook for next 2 weeks

Week	Max. Temp	Min. Temp.	Rainfall Anomaly
Week 3 07 th March to 13 th March	Normal	Normal	Normal
Week 4 14 th March to 20 th March	Normal	Normal	Above Normal

Regards
Met Centre Shimla

For latest Weather Bulletin and warnings kindly visit following links

Website: <https://mausam.imd.gov.in/shimla/>

Facebook: <https://www.facebook.com/profile.php?id=100018411811087>

Twitter: <https://twitter.com/himachalmausam>

IG: www.instagram.com/metcentresml/